



TL470HF | Telescopic Handlers



Performance

Lifting height	6957.0 mm
Rated capacity	3500 kg
Capacity (at max. height)	3000 kg
Capacity (at max. reach)	1500 kg
Max. reach	4002.0 mm
Crowding force	6200 daN

Weights

Weight (unladen)	7130 kg
------------------	---------

Traction

Standard tyres	Standard 405/70x20
1st gear / low range (40 km/h option)	6 (6) km/h
1st gear / high range (40 km/h option)	11 (12) km/h
2nd gear / low range (40 km/h option)	16 (18) km/h
2nd gear / high range (40 km/h option)	30 (40) km/h

Drive System

Main drive	Hydrostatic motor with 2 speed gearbox
Transmission	Hydrostatic with electronic regulation

Engine

Make / Model	PERKINS / 1104D-E44TA
Fuel	Diesel
Cooling	Liquid
Rated power (DIN 6271) at 2200 RPM	96.5 kW
Maximum torque at 1400 RPM	516.0 Nm
Number of cylinders	4
Displacement	4.40 L

Hydraulic System

Pump type	Load sensing pump
-----------	-------------------

Cycle Times

Lift time - no load	4.9 s
Lower time - no load	4.3 s
Telescope in time at max. reach - no load	4.8 s
Telescope in time at max. height - no load	4.8 s
Telescope out time at max. reach - no load	4.9 s
Telescope out time at max. height - no load	4.9 s

Brakes

Engine braking	Hydrostatic
Parking and emergency brake	Negative brake with hydraulic command

Fluid Capacities

Axles and reduction gears front / rear	9.1/9.1 L
Engine oil	8.50 L
Fuel tank	138.00 L
Hydraulic reservoir [HYDRAULIC]	59.00 L

Standard Features

Aggravating Movements Arrester (AMA)	Mudguards
Hydrostatic transmission	Narrow hook-up for mounting of the equipment
ROPS/FOPS operator cab	Mechanical lock of the equipment
Heating, demisting and ventilation	Joystick with forward/reverse control
Front and rear washer/wipers	Transmission lock override
Suspension seat	Work lights on top of the cab
Road lights	Load Sensing Pump
Turn signals	Turbo-charged engine - 130 HP
Right and left side mirrors	Cold start
Two way hydraulic supply at the end of the boom	Standard 405/70x20 tyres

Options

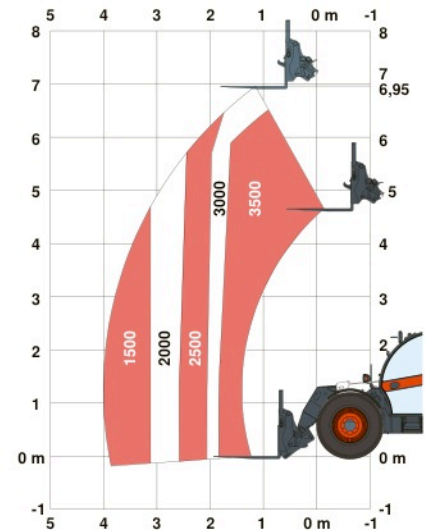
Air conditioning	Manitou carriage with hydraulic attachment lock
Auxiliary line on boom with ACD and electric connectors	Manually adjustable drawbar coupler tow hitch
Back-up alarm	No forward/reverse control on joystick
Basic tow hitch	Pintle tow hitch
Blue lights for henhouses	Proportional engine fan with inverter
Boom light	Protective grill for windshield
Boom stop	Quicktach carriage with hydraulic attachment lock
Boom suspension	Rear auxiliary line
Catalytic purifier muffler	Rear auxiliary line with hydraulically adjustable tow hook
Custom colour	Rear electric auxiliary
Cyclonic air prefilter	Safety hammer
Double right rear view mirror	Sears air suspension seat
Drawbar coupler tow hitch	Support for vehicle registration plate with rear hydraulic hitch
Fire extinguisher	Support for vehicle registration plate without rear hydraulic hitch
Front tow hitch	Tool box
Grammer air suspension seat	Transmission 40 km/h
Hydraulically adjustable tow hook	Wheel wedge
Lockable fuel cap	

Environmental

Level of acoustic power (LWA)	106 dB(A)
-------------------------------	-----------

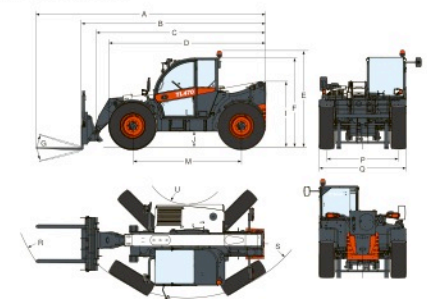
Load Charts

With forks and standard 405/70x20 tyres



Complies with stability test EN1459 annex B

Dimensions



(-)	900.0 mm	(L)	1356.0 mm
(A)	6074.0 mm	(M)	2870.0 mm
(B)	4869.0 mm	(N)	643.0 mm
(C)	4763.0 mm	(O)	1013.0 mm
(D)	4145.0 mm	(P)	1895.0 mm
(E)	2561.0 mm	(Q)	2300.0 mm
(F)	2374.0 mm	(R)	5015.0 mm
(G)	135°	(S)	3714.0 mm
(I)	1752.0 mm	(U)	1092.0 mm
(J)	430.0 mm		